

MEGAPOLIS

FLOOR LAYOUT

BUILDING -
A1, A2, A6, A7, A11 & A12
Typical Floor Plan

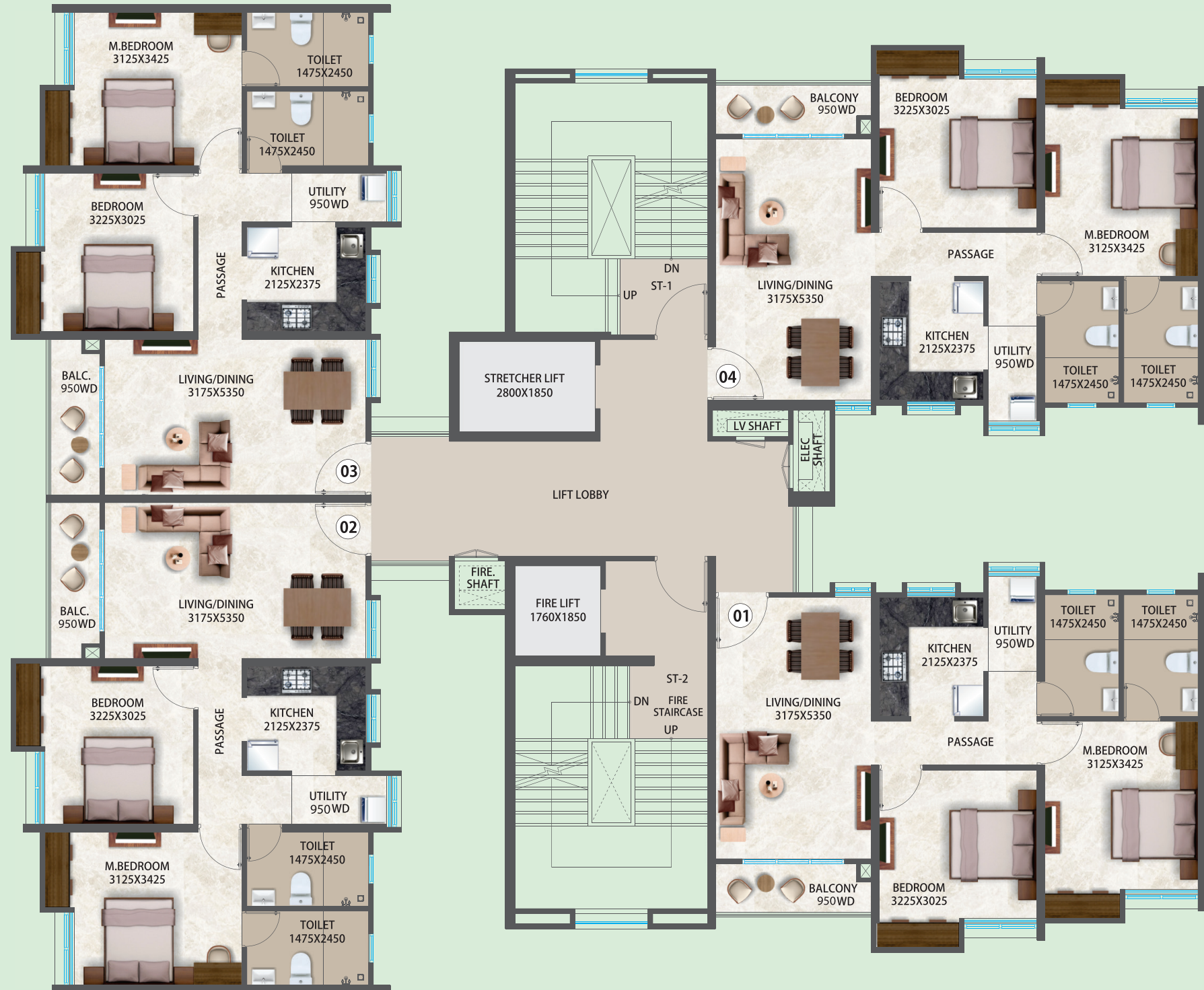


| | |
|-------------------------|--|
| Building | A1, A2, A6, A7, A11 & A12 |
| Floor | G + 19 |
| Flat Numbers | 101, 102, 103, 104 to 1901, 1902, 1903, 1904 |
| Type | 2 BHK |
| Carpet Area as per RERA | 59.20 |
| Balcony | 2.90 |
| Utility | 2.70 |



MEGAPOLIS FLOOR LAYOUT

BUILDING -
B1 & B2
Typical Floor Plan



| | |
|-------------------------|--|
| Building | B1 & B2 |
| Floor | G + 18 |
| Flat Numbers | 101, 102, 103, 104 to 1801, 1802, 1803, 1804 |
| Type | 2 BHK |
| Carpet Area as per RERA | 59.20 |
| Balcony | 2.90 |
| Utility | 2.70 |



MEGAPOLIS

FLOOR LAYOUT

BUILDING -
A3, A4, A5, A8, A9 & A10
Typical Floor Plan



| | |
|-------------------------|--|
| Building | A3, A4, A5, A8, A9 & A10 |
| Floor | G + 19 |
| Flat Numbers | 101, 102, 103, 104 to 1901, 1902, 1903, 1904 |
| Type | 2 BHK |
| Carpet Area as per RERA | 59.20 |
| Balcony | 2.90 |
| Utility | 2.70 |

